



HOME  
NURSING  
AGENCY

Part of UPMC

# celebrate GIVING

Fall 2016 | Issue 3



# AGENCY HEADLINES

## HNA Home Health Ranks Among Top Providers Nationwide Since 2006

HNA Home Health was named once again to the top 25% of agencies in the country as a 2015 HomeCare Elite Top Agency. A continual focus on patients and high quality of care has allowed HNA Home Health to earn a position on the HomeCare Elite list each year since it began in 2006. HNA Home Health team is committed to providing the best quality of care with dignity and respect to every patient.



## HNA Private Duty Home Care Repeats for Fourth Year with National Award



HNA Private Duty Home Care has earned Home Care Pulse's "Best of Home Care" distinction for the fourth straight year and is one of only two non-medical home care providers in the area to be recognized. Recent surveys indicate that **92% of our Private Duty Home Care clients would recommend the care to others**, compared with only 76% of clients nationally who would promote their respective home care provider. Private Duty Home Care helps clients - from seniors needing assistance with daily routines to individuals with chronic illnesses - safely remain in the comfort of home.

## New Agency Brand Debuts in Billboard Campaign

**Have you seen it?** HNA's logo has been remodeled! Our new Home Nursing Agency brand blends Home Nursing Agency's 48-year history of serving our community with the strength of UPMC to provide even better care for those we serve. This new brand debuted in a billboard campaign featuring our employees throughout our services areas. **Home Nursing Agency is bringing world class care to your home!**

Here is a sample of our billboard in the Mifflin County area:



**Celebrate Giving** is a bi-annual publication of Home Nursing Agency's Marketing Department and the Home Nursing Agency Foundation.

Editor:  
Kim Helsel

Designer:  
Jennifer Jones

Contributors:  
Natalie Depto-Vesey  
Carol Galoto  
Stephanie Roefaro  
Pam Seasoltz

Contact us at:  
**Home Nursing Agency Marketing Department**  
201 Chestnut Avenue  
PO Box 352  
Altoona, PA 16603-0352

Email: [celebrategiving@homenursingagency.com](mailto:celebrategiving@homenursingagency.com)

Like us on Facebook!

**Home Nursing Agency Foundation**  
Pam Seasoltz, Director of Development  
Email: [foundation@homenursingagency.com](mailto:foundation@homenursingagency.com)

1.855.GIVE.HNA  
(1.855.448.3462)



Home Nursing Agency is a grateful recipient of funding from the following United Ways: Bedford County, Blair County, Huntingdon County, and the Laurel Highlands.

# IN THE NEWS

## Home Nursing Agency Announces Growth of Hospice Program, Rebranding as Family Hospice and Palliative Care

Home Nursing Agency is pleased to announce the growth of its hospice program and rebranding as *Family Hospice and Palliative Care, Part of UPMC HNA*.

Earlier this year, Family Hospice and Palliative Care, headquartered in Mount Lebanon, PA, was integrated into UPMC as part of Home Nursing Agency, expanding the combined service area for hospice care from 11 to 20 counties in Western and Central Pennsylvania. The combined program serves 4,000 patients annually and is the largest not-for-profit hospice provider in the Commonwealth.

Family Hospice and Palliative Care became one of Western Pennsylvania's first hospice providers in 1980 and has a rich history of serving patients with life-limiting illnesses and their families, focusing on optimal quality of life for patients.

"Home Nursing Agency is a trusted provider of home health and hospice services in our region," explains Phil Freeman, Home Nursing Agency President. "As our services have expanded through the decades, our focus and expertise on hospice and palliative care have grown stronger. Aligning our brand with Family Hospice offers the distinct opportunity to feature our commitment to this unique and tremendously important mission, across all of the geographies that we serve."

As a program of Home Nursing Agency, Family Hospice will continue to serve patients with the same trusted level of care that has been offered in this region since 1983 when Home Nursing Agency became the first home health agency in Pennsylvania to also be Medicare-certified as a hospice provider. Hospice services will

continue to be delivered by the same employees and volunteers as part of the larger HNA continuum of care.

"As a 30-year employee of Home Nursing Agency, I have seen the organization grow and evolve firsthand," shares Kathy Baker, Chief Operations Officer for Family Hospice. "We look forward to continuing to provide compassionate care and quality services to the residents of our region. With access to the extensive resources of the UPMC Palliative and Supportive Institute, we are also able to better serve our patients and families as they cope with chronic, life-limiting illnesses."



**Family Hospice & Palliative Care**

Part of UPMC HNA

## IN THIS ISSUE

### 3 Giving Life Moments

Hospice Patient Granted Wish to be Present for Life Event

### 5 Giving Independence

HNA Home Health Walks with Alexandria Woman on Road to Recovery

### 7 Giving Peace of Mind

Huntingdon County Family Thrives with Support of HNA Pediatric Home Connection

### 9 Giving Connections

Bedford HNA Adult Day Services Helps Members Share the Past & Enjoy the Present

### 11 Giving Excellence

HNA Wound Specialist Shares Passion & Expertise

### 12 Giving Expression

Art Provides Creative Outlet for Emotions

### 13 Giving Thanks

to Our Donors

### 18 HNA Event Calendar

Plan to Join Us for These Upcoming Events



# GIVING *life moments*

## Hospice Patient Granted Wish to be Present for Life Event

Cambria County resident and hospice patient Areline "Annie" Michina was delighted to find out her granddaughter was expecting a baby last year, but the possibility of being part of the baby shower to celebrate this life event seemed unlikely given Annie's declining health.

The hospice team in Cambria County pulled together to make this special day a reality on September 16, 2015, through the help of Home Health Aide Patty Simeone and RN Case Manager Donna Hershel.

Patty helped Annie get ready, preparing her makeup and nails. Through your support of the HNA Foundation, Mission Grant funding provided a wheelchair-accessible van to transport Annie to and from the shower.

Donna accompanied Annie on the van, stayed with her throughout the event, and made sure she was at ease back home after the day's activities.

The team continued supporting Annie at home until she passed away comfortably on December 5, 2015. Hospice makes it possible for those

facing a life-limiting illness to have more moments that matter. To see more stories of how hospice care allows patients to experience a good life - all the way to the end, check out [momentsoflife.org](http://momentsoflife.org).

### Are You or a Loved One Facing a Serious Illness?

Check out the online tool "What Are My Options?" at [moments.nhpco.org/options](http://moments.nhpco.org/options). This interactive resource provides information that may help guide your healthcare choices... especially if that illness is getting worse. In less than 60 seconds, you'll have important answers to help guide your decisions.

## FREQUENTLY ASKED QUESTIONS ABOUT FAMILY HOSPICE

### What is hospice?

Hospice is a special kind of comfort care and support delivered by trained professionals for those with a life-limiting illness and their families. This philosophy focuses on the person, not the disease, to address the medical, emotional, psychological, and spiritual needs of the patient and family. Care is available wherever you call home - your own home or a nursing facility, hospital, or an assisted living facility/personal care home.

### Can I keep my personal physician?

Yes. We will work closely with your healthcare provider and help to reinforce the primary physician/patient relationship. We consider this bond to be a high priority.

### Who is eligible for hospice care?

Any individual diagnosed with a life-limiting illness that, should the illness proceed as anticipated, would result in a life expectancy for the patient of six months or less is eligible for hospice care. After a physician certifies the patient's hospice care, the patient and his or her family would elect hospice care to focus on quality of life.

### Who pays for hospice?

Hospice is a 100% covered benefit under Medicare. This benefit covers the hospice team's services, medications, equipment, and supplies related to the patient's life-limiting illness. Hospice care is also covered under Medicaid and many insurance plans.

### Who can make a referral to hospice?

Anyone can make a referral to Family Hospice, including physicians, individuals, family members, friends, clergy, and other healthcare providers. Call us at 1.800.445.6262 to make a referral. Hospice professionals conduct an assessment at no cost, and if an individual is eligible, the team works closely with the individual's primary care physician to begin providing hospice services.

### How can hospice volunteers help?

Our hospice volunteers are a special group of individuals who give of their time and talents to assist patients and their families. They can assist with daily activities and may read, sing, write letters, or just reminisce with you and your loved ones about life's experiences. Their support enhances the quality of life for patients and helps relieve some of the demands that are often placed on caregivers.

### Is Family Hospice licensed and accredited?

Yes. We are licensed by the Pennsylvania Department of Health and the Centers for Medicare and Medicaid Services.

### How does the agency safeguard your protection?

Every Home Nursing Agency/Family Hospice employee/volunteer has extensive background clearances. We cover each of them with general liability insurance and Worker's Compensation insurance.

*At left, Annie and her granddaughter pose for a photo during the baby shower. First two photos below, HNA Home Health Aide, Patty Simeone helps Annie with her makeup in preparation for the shower. Last photo, Patty, Annie, and HNA RN Case Manager Donna Hershel.*







# GIVING independence

## HNA Home Health Walks with Alexandria Woman on Road to Recovery

After surviving a tragic car accident in January 2015, multiple surgeries, and illnesses, Alexandria resident June Peters is on the road to recovery, thanks to the support of her husband Bill and the therapists of *HNA Home Health*.

With severe back and neck injuries, June's return to a normal lifestyle seemed unlikely. However, the regular support of HNA Physical Therapist Kevin Wallen and Occupational Therapist Gina Sunderland allowed June to set daily goals that supported her progress and longer term goals to become independent enough that her husband Bill could return to coaching baseball. Bill stepped away from his role as varsity baseball coach at Juniata Valley High School last spring to care for her, and this year Bill was on the field again as a coach in the community's teen league.

### ONE STEP AT A TIME

"Kevin and Gina have brought me to where I am," June shared. "Kevin always brightened my days. He was positive and always focuses on the good!" Kevin's guidance helped June walk through each step - figuratively and literally - of her recovery.

With Bill always nearby to observe and learn, Kevin guided June through getting up and down from a chair, moving from side to side, and moving more independently throughout the house.

"June's progress is a product of her commitment to get better," Kevin noted, as he shared that his role as a physical therapist includes listening to and getting to know the patient's goals so that he can help them make strides in that direction. "I helped June to think about each step before she moved and how she was going to get from one place to another. I had to ask her before she tried to move if her mindset was 'I can' or 'I can't'."

### MAKING "I CAN" REALITY

June's "I can" mentality carried her through various milestones that she, Bill, and Kevin celebrated together, including reaching something on an upper shelf in the kitchen, dressing herself, and moving around the home more independently.

June and Bill are amazed at the progress she has made in the past year, as she can now maneuver around the house with just a rollator walker or Bill's arm for stability. She reflects, "I never thought I'd see the day!"

*Left, June and husband Bill at home during a visit from Kevin Wallen, HNA Physical Therapist.*



## FREQUENTLY ASKED QUESTIONS ABOUT HNA HOME HEALTH

### WHAT IS HOME HEALTH?

HNA Home Health offers care when an injury, chronic illness, or surgery affects the quality of life. Care is available in your own home or an assisted living facility/personal care home. Services are tailored to each patient's needs and may include nursing care, physical therapy, occupational therapy, speech therapy, nutrition services, social services, specialized wound care, IV and chemo therapy, and pediatric specialty care.

### CAN I KEEP MY PERSONAL PHYSICIAN?

Yes. We will work closely with your health care provider and help to reinforce the primary physician/patient relationship. We consider this bond to be a high priority.

### WHO IS ELIGIBLE FOR HOME HEALTH CARE?

Any individual requiring nursing and/or a rehabilitative therapy is eligible for home health care. The nurses work with the patient's physician to complete an assessment and implement a plan of care.

### WHO PAYS FOR HOME HEALTH CARE?

Many health insurance policies pay for home health services, such as Medicare, Medicare Advantage Plans, Medicaid, private insurances, and Health Maintenance Organizations (HMOs). Call us first, and we will help you find out what your insurance will pay for.

### WHO CAN MAKE A REFERRAL?

Anyone can make a referral to Home Nursing Agency. Call us at 1.800.445.6262, and our healthcare professionals will work closely with an individual's primary care physician to begin providing services.

### HOW DOES THE AGENCY SAFEGUARD YOUR PROTECTION?

Every Home Nursing Agency employee/volunteer has extensive background clearances. We cover each of them with general liability insurance and Worker's Compensation insurance.



# GIVING *peace of mind*

## Huntingdon County Family Thrives with Support of HNA Pediatric Home Connection

*There is something special about being first.*

For Vickie Yablonski, LPN with HNA Pediatric Home Connection, and her seven-year-old patient Elizabeth "Lizzy" Koontz, that something special keeps them connected through many hours and miles each week.

"Vickie has been with Lizzy since she enrolled in the program at two years old," explains Lizzy's mom Maria. "Vickie was Lizzy's first nurse, and Lizzy was Vickie's first patient."

Lizzy's complicated health conditions began at birth and restrict her ability to move her arms and legs, cause seizures, require tube feedings, and severely limits her vision. Her extensive medical needs require round-the-clock care and careful attention. After two years of caring for Lizzy on their own (while also balancing the care of their older son), Maria and her husband Jeff enrolled Lizzy as a patient of HNA Pediatric Home Connection for a nurse to provide daily care and accompany Lizzy to appointments, and eventually, to ride along on Lizzy's weekly van trips back and forth to the Western Pennsylvania School for Blind Children in Pittsburgh.

"All we have is Home Nursing Agency's help," Maria shares. "We don't have family close by. The travel help is indispensable, and I can get some sleep when I know Lizzy is in good hands."

When Jeff and Maria later welcomed another son to the family, they did not have to worry about Lizzy's care back at home because of Vickie and Lizzy's other nurses.



"For me, it's an honor to care for Lizzy," explains Vickie, a mom of 12 biological and adopted children, who has a unique understanding of Lizzy's special needs, having cared for a foster child with a similar diagnosis. "I adore Lizzy - she's so much fun!"

Lizzy's giggles fill the room when she is held in a particular position in the arms of someone who loves her. Her delight is obvious when she's enjoying the outdoors or her brothers' antics.

"Even though she doesn't speak like we do, she communicates with us," Vickie affirms. "She has different noises for all of her cues. She is such a special little girl."

### YOUR SUPPORT MAKES A DIFFERENCE

Your donations to the Home Nursing Agency Foundation allow Pediatric Home Connection families like the Koontz family to experience life as "normal" as possible. Foundation Mission Grant funding covered the cost of additional nursing care so that the family could attend a loved one's funeral while Lizzy remained safely at home in her nurse's care.

*At the top and lower left, HNA Pediatric Home Connection LPN Vickie Yablonski talks with Elizabeth "Lizzy" Koontz and administers her tube feeding. At right, Vickie and Lizzy's mom Maria show that it takes a team approach to care for special children.*



### FREQUENTLY ASKED QUESTIONS ABOUT

## HNA PEDIATRIC HOME CONNECTION

*Special Children. Special Families. Special Nurses.*

### WHAT IS PEDIATRIC HOME CONNECTION?

HNA Pediatric Home Connection provides home nursing care to children from 4-16 hours per day. This care is provided so that parents can sleep, work, or go to school. Our qualified and specialized nursing staff is competent in ventilators, tube feedings, IV therapy, and medication administration.

### WHO PAYS FOR PRIVATE DUTY HEALTH CARE FOR CHILDREN?

Many health insurance policies pay for skilled nursing services. We accept all private insurances as well as most state Medicaid and waiver programs. We offer a consultation to help determine eligibility of services, at no cost.

### WHAT ARE THE HOURS OF OPERATION?

We are available 24 hours a day, 7 days a week to support your family.

### WHAT REGION DOES PEDIATRIC HOME CONNECTION SERVE?

We provide home health care for children from birth through 21 years in 12 counties throughout central PA: Bedford, Blair, Cambria, Centre, Clearfield, Franklin, Fulton, Huntingdon, Indiana, Juniata, Mifflin, and Somerset.

### HOW LONG WILL IT TAKE TO BEGIN CARE?

If your child is in the hospital and you anticipate the need for nursing services, please contact us as soon as possible so we can prepare for your child's needs by the date of discharge. Our extensive screening and hiring process usually takes a minimum of three to four weeks to complete. If you are already caring for your child at home and are searching for a care provider, please contact us as soon as possible to help expedite the process.

### HOW CAN YOU HELP SCHOOL-AGE CHILDREN?

Learning is vital for all children, regardless of age or ability. We support school-age children by actively participating in the Individualized Education Program (IEP) process within the schools, and our nurses accompany children to school and throughout the day to provide medical care as necessary.

### WHO CAN MAKE A REFERRAL?

Anyone can make a referral. Call us at 1.800.445.6262 to find out how we can meet the needs of your family.





# GIVING *connections*

## Bedford HNA Adult Day Services Helps Members Share the Past and Enjoy the Present

As long-distance telephone operators, Elaine Rheem and Betty Zezula spent many years connecting callers to the right people. Years later, the two made a connection through the *HNA Adult Day Services Center* in Bedford.

When Elaine, 75, of Saxton, struck up a conversation with Betty, 92, of Six Mile Run, at the Adult Day Services program, the two realized they shared the same vocation as switchboard operators.

"I remember getting calls from the servicemen wanting to talk to their families," Betty recalled. "I knew it would mean so much to them, and it was our job to make the connection."

She and Elaine carried their passion for helping others to their time at the Adult Day Services center, where they made it their personal mission to spread joy to other members.

### "WE BRIGHTEN DAYS"

"When people are grumpy, they're missing so much!" Betty said with an ornery grin. "We brighten people's days by what we do here."

Many of the members consider themselves as part of the team, as Center Coordinator Vickie Brown shares that they try to involve members in the areas they feel most comfortable. Some like to lead activities, and others prefer to get involved with hands-on tasks like doing dishes or shredding papers.

"I'm privileged to be part of it," Elaine shares. Diagnosed with Alzheimer's disease, Elaine attended the program previously but stopped coming when she faced some other health issues. The psychiatrist treating her for Alzheimer's disease recommended that she return

to the program for socialization. Elaine is now blossoming with the attention and care and considers herself to be part of the team.

"This is a win-win situation," she says. "I'm so glad it's a working environment. I've enjoyed the many ways I've been helpful to people. When I'm here, I'm very happy about it!"

### HELPING BOTH MEMBERS AND CAREGIVERS

Geared for adults who cannot perform self-care activities independently or function alone safely, the center provides a safe, home-like environment for members to enjoy activities, socialization, special holiday celebrations and events, outdoor walks, and more. The center's staff offer close supervision and assistance as needed, offering peace of mind for caregivers who are working or handling other responsibilities.

Located at the Bedford United Methodist Church, members also enjoy

regular times of devotions and singing led by Associate Pastor Jim Miller, who has seen the program at work.

"I try to make our times together fun so that the members get a kick out of it," Pastor Miller says. He is glad that his outreach can be part of such a valuable community service. "Members get the best of care and attention here. I know caregivers need a break, and the program is a benefit in that way to give caregivers security and release them of guilt. It is also a great benefit to the members who come."

*Elaine Rheem (bottom left) has attended Adult Day Services for more than two years. She enjoys the time with other members (like Betty Zezula at right), staff (Denise Musselman, Program Assistant, at right), and with Associate Pastor Jim Miller (bottom right), who regularly visits the center to offer devotions and lead singing.*

*Betty has since relocated to a nursing facility to have the round-the-clock care and supervision that she needs.*



## FREQUENTLY ASKED QUESTIONS ABOUT HNA ADULT DAY SERVICES

### WHAT IS ADULT DAY SERVICES?

HNA Adult Day Services centers offer daytime care in a safe, structured, and homelike environment for individuals over the age of 18.

Are you concerned about your loved one's safety at home during the day? Are they socially isolated? Do they require ongoing medical monitoring?

HNA Adult Day Services can help. Services include care management, health promotion activities, social/recreational activities, nutritious meals and snacks, personal care, transportation arrangements, and family support.

### WHERE ARE CENTERS LOCATED?

132 E. John St., Bedford | 814.623.6803  
118 Ebony Rd., Ebensburg | 814.472.1282

### WHAT ARE THE HOURS?

Centers are open Monday through Friday, 7:30 a.m. to 6 p.m., however special accommodations may be considered depending on your unique needs. We are closed on major holidays.

### WHO PAYS FOR ADULT DAY SERVICES?

We accept self-pay, as well as funding sources including Medicaid Waiver, long term care insurance, Veterans Benefits, as well as various state and county programs. Charitable care through the Home Nursing Agency Foundation can also be provided to individuals with limited resources.

### ARE HOME NURSING AGENCY CENTERS LICENSED?

Yes. All centers are licensed through the Department of Aging.

### WHO CAN MAKE A REFERRAL?

Anyone can make a referral. Simply call us at 1.800.445.6262 to find out what we can offer for you or your family member.



# GIVING *excellence*

## HNA Wound Specialist Shares Passion & Expertise



Leslie's curiosity led her to pursuing a career as a nurse, beginning as an LPN then earning her RN degree, Bachelor of Science in Nursing, and eventually a Master of Science in Nursing.

Through the encouragement of a former coworker at UPMC Altoona who introduced her to the ostomy field, Leslie became certified as an Enterostomal Therapy Nurse, or CETN, in 1987. This certification later became known as a certified wound, ostomy, and incontinence nurse (CWOCN), which expanded the role for the CETN to WOCN. "Since achieving my certification, I have been caring for people with ostomies and complicated wounds and have been an advocate for continence," Leslie says.

The inspiration she received motivated her to become more involved in care. "My coworker's encouragement and her previous commitment to the field, caring for ostomy patients, fostered my involvement with the United Ostomy Associations of America (UOAA) as part of my career path. Since that time, helping patients learn about and cope with their ostomies has been an important part of my nursing career."

Leslie is currently the vice president of the local UOAA. In her opinion, one of her most important roles is patient advocate; being involved with support groups provides her a setting in which she is able to relay information to help persons struggling with new ostomies, as well persons who have learned to live and cope with ostomies. For the past 28 years, she has refined her skills and expertise by attending local, regional, and national WOCN conferences; networking with colleagues; reading journals; and maintaining her CWOCN.

A leader in her field, Leslie Wilson is a Clinical Nurse Specialist for *HNA Home Health* who has dedicated her life's work to helping patients and advancing wound, ostomy, and continence care. She was recognized with the Northeast Region Wound, Ostomy, Continence Nurses (NER WOCN) Nurse of Distinction Award in 2015 and highlighted in the July 2015 issue of the *Ostomy Wound Management Journal*.

As shared in the *Ostomy Wound Management Journal*, Leslie became interested in ostomies as a young teenager in the early 1970s when her grandfather was diagnosed with colon cancer and lived with an ostomy for two years before he passed away.

"There was little conversation about his condition and what happened to him," Leslie says. "But it sparked my curiosity."

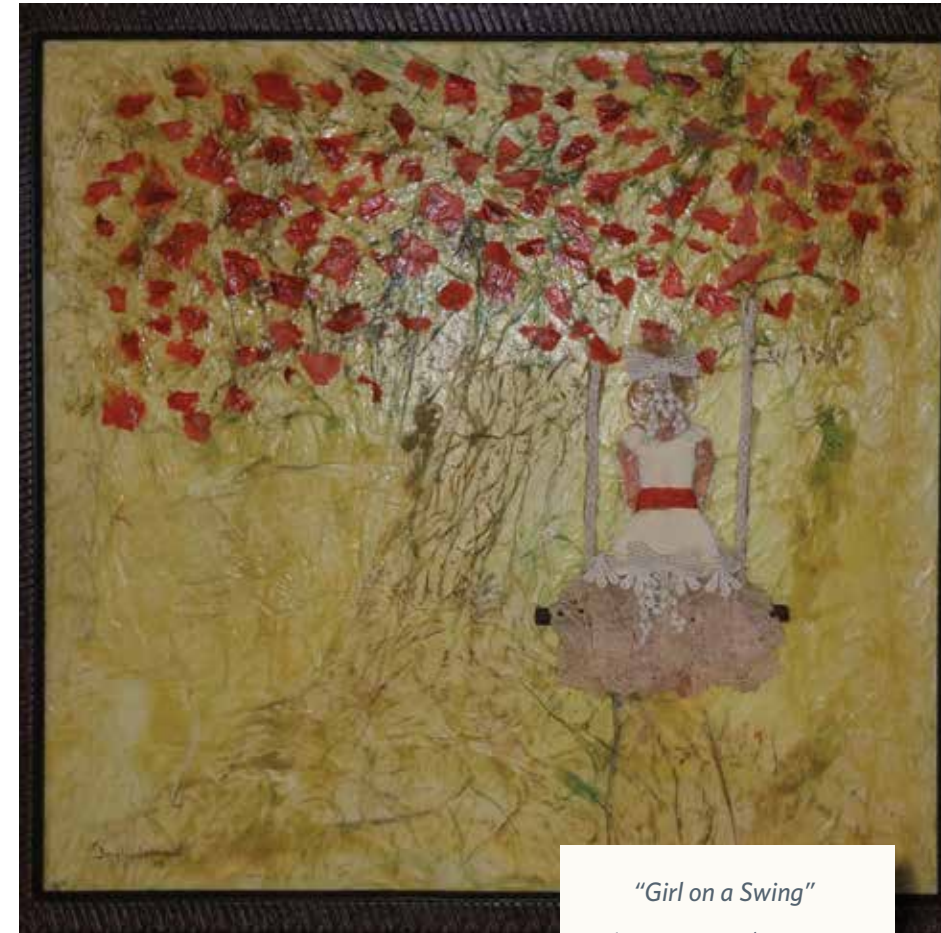
Leslie has been with Home Nursing Agency for more than 10 years. She credits the HNA administration for how far her position has evolved. Her responsibilities include, but are not limited to, problem-solving complex ostomy and wound care; chart audits; and collaboration with product suppliers, nursing supervisors, and physicians. She also educates new and seasoned employees regarding ostomy care, collaborates with and mentors nurses about the care of ostomies in the home care setting. Additionally, she provides direct patient care and phone consultations. Leslie also partners with the HNA nutritionists, occupational therapists, physical therapists, and other health care providers help provide holistic recovery for an ostomate.

Three Ps have been Leslie's motto for years: Persistence and Patience will Prevail. "If you don't get it right the first time around, don't give up in your pursuit for the best solution," she says.

While there's no doubt that persistence and patience will help any nurse prevail, curiosity — the desire to seek new answers and open new doors — is what keeps good clinicians moving toward a more constantly challenging and fulfilling scope of practice.

# GIVING *expression*

## Art Provides Creative Outlet for Emotions



*"Girl on a Swing"*

*I spent many hours as a child on the swing my father hung in the big tree behind our house. Girl on a Swing takes me back to more Carefree days.*

Every piece of art tells a story, as an outward expression of an inner emotion. The above piece was accompanied by this note from the artist:

Art therapy clients from the *HNA Center for Counseling* displayed masterpieces in a variety of media at The Creative Healing Gallery art exhibit last fall. Art therapy is an alternative form of therapy for clients with mental health issues who may benefit from a tangible, expressive outlet for their thoughts and emotions. Art therapy supplies are provided through Mission Grant funding from the Home Nursing Agency Foundation.

As HNA Mental Health Counselor Trista Conway shares, one artist showcased in the recent exhibit (work pictured to left) began art therapy approximately two years ago as part of her treatment for severe depression and anxiety. After divorce ended her 33-year marriage, she had difficulty putting her emotions and thoughts into words and found great progress when she was able to use art to express herself.

"She has significantly healed by telling her story through art making and has been able to find doors opening and begin a new journey," Trista notes. "Our artist shares that art has helped her to step out of her comfort zone, and this has allowed her to embrace being pushed out of her comfort zone in all areas of life."

### The Creative Healing Gallery Art Exhibit

Tuesday, November 1, 2016

12 - 6 p.m.

Community Health Center  
500 East Chestnut Ave., Altoona

# GIVING *thanks*

## Every Dollar Makes A Difference - Donors Reach Out to Help Others

For more than 48 years, Home Nursing Agency has depended upon the generosity of community partners - individuals, businesses, local governments, and organizations - to help ensure that our mission of providing care and services for those in need will continue.

Charitable dollars are necessary to help care for individuals and families who have limited resources, and support many of the Agency's community-valued services like the Healing Patch children's grief program and bereavement support groups for adults and families - both of which are offered free of charge.

*Every dollar truly helps so many. Every gift truly has a story.*

**The following donations were received July 1, 2015 through December 31, 2015.** We apologize for any errors or omissions to this list. Every effort is made to assure that proper information is recorded. Please call Carol Galimoto at 1.800.992.2554 to make us aware of any corrections or changes.

**Thank you to the following donors who have helped make a difference in the lives of our neighbors.**

### COMMUNITY PARTNERS - BUSINESS/ORGANIZATIONS

Adams Township, Sidman  
Advisory Board of Penn State Altoona  
American Legion Auxiliary Unit 748  
Anonymous 2015-2016  
Arrow Land Solutions, LLC  
Belfast Township, Needmore  
Benner Township, Bellefonte  
Bethel United Methodist Church  
Blair County Arts Foundation  
Blue Knob Auto, Inc.  
Broad Top Township, Defiance  
Burnside Township, Karthaus  
Captain Jack Joint High School, Class of 1957  
Cassville Borough  
Catered Affairs  
Centre County United Way  
Centre Foundation  
Cesare Battisti Mutual Benefit Association  
Chestnut Ridge Education Association  
Coaldale Borough, Six Mile Run  
Del Grosso Foods, Inc.  
Delta Care Rx  
Don Davis Plumbing, Heating and AC  
DRA Taggart, LLC  
East St. Clair Township, New Paris  
Estate of Kathleen Holderbaum  
Estate of Melva Collary  
Estate of Mildred Port  
Everett Seventh Day Adventist  
ExxonMobil Production Company,  
U/S Synergies Team  
First United Methodist Church -  
Unity Sunday School Class  
Franklin Township, Tyrone  
Garden Club of Johnstown

Greater Beneficial Union District 45th  
Greystone Servicing Corporation, Inc.  
Gulich Township, Smithmill  
Haines Township, Aaronburg  
The Hershey Company  
Huston Township, Julian  
Imler's Poultry  
Inco Beverage, Inc.  
Juniata Township, Duncansville  
Knisely & Sons, Inc.  
The Lakemont Partnership  
Licking Creek Township, Needmore  
Life O'Riley Memorial Ride Event  
Lincoln Township, James Creek  
Mainline Medical Center  
Marklesburg Borough, James Creek  
Martin G. Kyper Insurance  
Millheim Borough  
Mt. Zion Reformed Church of  
Pavia Sunday School  
New Look Uniform Shop, Inc.  
Operation Small Steps  
Penn Township, Coburn  
Poole Anderson Construction, LLC  
Port Family Foundation  
Porter Township, Alexandria  
Providence Presbyterian Church (U.S.A.)  
Reilly, Creppage & Co., Inc.  
Reliance Bank  
Robert D. Heath Funeral Home, Inc.  
Rotary Club of Ebensburg  
S. J. McCloskey Builders, Inc.  
Shirley Township, Shirleysburg  
Snyder Township, Tyrone  
Standing Stone Post 1754 VFW

Taylor Township, Roaring Spring  
Todd Township, Broad Top  
Township of Southampton  
Tunnelhill Borough Gallitzin  
United Way of Allegheny County  
United Way of Bedford County  
United Way of Blair County  
United Way of Greater Philadelphia and  
Southern New Jersey  
United Way of Huntingdon County  
United Way of Laurel Highlands  
United Way of Summit County  
Walker Township, McConnellstown  
Warriors Mark Township  
Wells Township, Wells Tannery  
Woodbury Township, Woodbury



### COMMUNITY PARTNERS - INDIVIDUALS

Anonymous (5)  
Mrs. Norma D. Aberegg  
Mr. Frank Ake  
Ms. Tori Akins  
Mrs. Barbara J. Albarano  
Mr. and Mrs. Ralph J. Albarano  
Ms. Lois M. Albright  
Mr. Joseph Ambrisco  
Mrs. Betty L. Amrhein  
Mr. and Mrs. Harold R. Anderson  
Mr. Paul F. Anderson  
Ms. Nanette Anslinger  
Mr. William R. Anslinger  
Mrs. Ann E. Anzman  
Mr. Richard C. Antes  
Mr. Richard H. Antoine  
Mr. Drew Appleman, Jr.  
Mr. Gert Aron  
Mrs. Kimbra Aurand  
Mrs. Donna Ayers  
Mr. and Mrs. Robert B. Bailey  
Mr. and Mrs. Theodore T. Baird  
Mr. and Mrs. Thomas W. Baker  
Mr. Glenn Baker  
Mr. and Mrs. James S. Baker  
Mr. and Mrs. Bryan Baker  
Mrs. Ruth Ann Baker  
Mr. Steven T. Balthaser  
Mr. and Mrs. John J. Baran  
Mrs. Jan M. Barber  
Mrs. Dona K. Bardell  
Mrs. Barbara Barker  
Mrs. Bettie L. Barner  
Mr. and Mrs. Thomas C. Barnhart  
Mr. Charles R. Barr  
Mrs. Constance V. Barton  
Ms. Marilyn L. Bassford  
Mr. and Mrs. James H. Bassler  
Mrs. Susan Bathgate  
Mrs. Delphine A. Baughman  
Mr. Richard L. Baughman  
Mr. and Mrs. Carl H. Baxter  
Mr. and Mrs. Joel Beach  
Mr. H. John Beamer  
Mrs. Lois C. Bearer  
Mr. and Mrs. Fred J. Beck  
Ms. Colleen M. Becker  
Mrs. Linda Becker  
Ms. Pamela S. Beckwith  
Ms. Mary Jane Beemiller  
Mrs. Lorrie K. Behrer  
Mr. and Mrs. Robert W. Beichler  
Ms. Donna J. Beigle  
Mr. Richard A. Bell  
Mr. and Mrs. Lewis C. Bellucci  
Rev. John Bennett  
Mrs. Clara V. Bennetti  
Ms. Kay L. Benton  
Mrs. Regina M. Bern  
Mr. Louis A. Bernier  
Mr. Norman R. Berzonsky  
Ms. Cindy L. Bice  
Mr. Louis C. Bice

Mrs. Lorraine A. Bieniek  
Ms. Diane K. Bierly  
Mrs. Barbara A. Blalock  
Ms. Julie M. Bleicher  
Ms. Carol A. Bloom  
Mr. and Mrs. Lawrence Bloom  
Ms. Winifred J. Boggs  
Mr. and Mrs. Samuel H. Booher  
Ms. Brandee L. Bortz  
Mr. and Mrs. Edward C. Boslet  
Mrs. Mary E. Boslet  
Mr. Donald L. Bousum  
Mr. and Mrs. Jack E. Bower  
Mrs. Lois Bozzo  
Mrs. Edith C. Bradford  
Mrs. Dorothy F. Bradley  
Mrs. Deborah L. Brawley  
Mr. and Mrs. Eugene S. Brawley  
Mr. and Mrs. Fred A. Bressler  
Mrs. Chloe I. Brooks  
Mr. and Mrs. Francis D. Brown  
Mrs. Helen L. Brown  
Mr. and Mrs. James Brown  
Mr. Joseph T. Brown  
Mr. and Mrs. Robert C. Brown  
Mr. Robert D. Brown  
Mr. and Mrs. Robert H. Brown  
Mr. and Mrs. Richard W. Brubaker  
Mrs. Frances M. Bunevitch  
Mrs. Mary B. Burichin  
Mr. Alan R. Burket  
Mr. and Mrs. Donald L. Burket  
Mr. Leonard Burns  
Mr. and Mrs. Fred W. Burris  
Mrs. M. Yvonne Buser  
Mr. Gary P. L. Bussard  
Ms. Barbara M. Butler  
Mrs. Marilyn Byers  
Mr. and Mrs. Thomas D. Cain  
Mrs. Marian A. Carey  
Mr. Randy Carothers  
Mr. and Mrs. Ralph R. Carr  
Mrs. Elizabeth N. Carrieri  
Mr. Dan Casey  
Mr. James R. Casner, Sr.  
Ms. Susan Cessna  
Mrs. Judith K. Charles  
Mrs. Rozella M. Chestney  
Mr. and Mrs. Garry Chick  
Mr. and Mrs. Mark Chidichimo  
Mrs. Marceline K. Chilcote  
Mrs. Janie P. Christner  
Mr. and Mrs. Michael Christy  
Mrs. Elizabeth L. Churella  
Mrs. Betsy A. Cignetti  
Ms. Martha J. Claar  
Mr. and Mrs. William D. Clapper  
Mr. Gerald R. Clark, Jr.  
Ms. Nellie J. Clark  
Mr. William E. Clark  
Ms. Lucinda M. Clingerman  
Mr. and Mrs. Dennis G. Close  
Mrs. Karolee S. Coffman

Ms. Sandy Cohenour  
Mr. and Mrs. Morley A. Cohn  
Mr. Robert M. Conner  
Mr. and Mrs. Eugene J. Conrad  
Ms. Margaret S. Conrad  
Mrs. Miriam J. Conway  
Mr. Norman P. Cooper  
Mrs. Mimi B. Coppersmith  
Mrs. C. Marie Corle  
Mrs. Virginia G. Cornell  
Mrs. Mary Ellen Cousin  
Mr. Richard Craig  
Ms. Alexis Crawford  
Mr. and Mrs. Bernard L. Creppage  
Ms. Pauline Crist  
Mr. Terry Crist  
Mr. and Mrs. Michael L. Croft  
Mr. Robert E. Crook, II  
Mr. and Mrs. Robert Crosson  
Ms. Sandra L. Crum  
Ms. Gloria F. Cuff  
Mrs. Pauline A. Daughenbaugh  
Ms. Renee David  
Mr. Robert A. Davis  
Mr. and Mrs. Ronald A. Davis  
Mr. and Mrs. J. Samuel Dean  
Ms. Grace DeBolt  
Ms. Patricia A. Decker  
Mr. Clifford M. Deckman, Sr.  
Mr. Louis A. DeFazio  
Mr. and Mrs. Thomas Deitz  
Mr. and Mrs. Eugene L. Delcorse  
Mrs. Karen F. Delmonico  
Mr. Leo J. DeLozier  
Mrs. Sylvia H. DeLozier  
Mr. and Mrs. William E. Delozier  
Ms. Mary Jane Deluna  
Ms. Natalie D. Depto-Vesey  
Mrs. Winifred M. DeShong  
Mrs. Grace M. Destadio  
Mrs. Mary Ann Detterbeck  
Mr. Donald L. Detwiler  
Mr. Leroy F. Detwiler  
Mrs. Ellen DeYulius  
Mrs. Mary Anne Dibbins  
Ms. Shirley Dickson  
Mrs. Judith L. Diebold  
Ms. Janet Diehl  
Mr. and Mrs. Barry F. Diehl  
Mr. and Mrs. Charles R. Dillen  
Mrs. LaVada Jo M. Dixon  
Mr. Stephen W. Dolak  
Mr. and Mrs. David A. Dolinger  
Mrs. Linda C. Domin  
Rev. Patrick J. Donahoe  
Ms. Judy A. Donaldson  
Mr. John E. Donoughe  
Mr. and Mrs. Stephen H. Dougherty  
Ms. Marjorie W. Dunaway  
Ms. Ruby Dunlap  
Mrs. Carolyn Dunn  
Mr. John L. Dunn  
Mrs. Marjorie H. Dunn



*Individual Donations Received July 1, 2015 - December 31, 2015*

Ms. Wanda M. Dunn  
Ms. Jewell C. Dysard  
Ms. D. Lorraine Earon  
Mrs. Bonnie Eichelberger  
Mr. Coolidge Eichelberger, Jr.  
Ms. Vicki L. Elmer  
Mr. Melton W. Elswick  
Mr. and Mrs. Kenneth Enck  
Mr. and Mrs. William R. England  
Mrs. Margaret F. Entrekin  
Commissioner and Mrs. Bruce R. Erb  
Mrs. Cindy B. Eriksen  
Ms. Linda Sue Esch  
Mr. Donald E. Fahnlone  
Mr. and Mrs. Paul S. Farcus  
Ms. Patricia A. Fasick  
Ms. Betty J. Fedorko  
Mrs. Jo A. Felix  
Mrs. Barbara R. Ferrazzi  
Ms. Diana M. Ferrazza  
Mrs. Katherine L. Fiore  
Mrs. Hazel F. Fisher  
Ms. Lois M. Fisher  
Ms. Paula Fleisher  
Ms. Carolyn F. Fleming  
Miss Nancy R. Fogel  
Mr. and Mrs. Vaughn F. Foor  
Mr. Joseph Fornari  
Mr. and Mrs. Kenneth E. Forshey  
Ms. Carolyn A. Frank  
Mr. Gary Frazer  
Ms. Grace M. Frederickson  
Mr. and Mrs. Philip L. Freeman, Jr.  
Mr. and Mrs. Jeffrey L. Freidhof  
Mr. and Mrs. Edmund Friedrich  
Mr. and Mrs. H. Kenneth Frye  
Ms. Joyce A. Fultz  
Mr. Robert S. Fultz  
Ms. Alice M. Fyock  
Mr. and Mrs. John T. Gaither  
Ms. Carol Galioto  
Ms. Melissa Galioto  
Ms. Josephine E. Gallace  
Mr. Joseph G. Gallagher  
Mr. and Mrs. Gerry Gardner  
Mr. Kenneth L. Garman  
Mr. Gary Garn  
Mr. Edward S. Garvis  
Ms. Regina A. Gasior  
Mr. Donald G. Gearhart  
The Honorable and Mrs. Rick Geist  
Mr. Jack Gensib  
Mrs. Yvonne R. Gentry  
Ms. Betty E. Gerlock  
Ms. Anthea L. Germano  
Mrs. Gail M. Getz  
Mr. and Mrs. Robert J. Gherrity, Jr.  
Miss Pat M. Gildea  
Ms. Sharon E. Glennly  
Ms. Kathryn Goetz  
Mr. and Mrs. Donald Goldberg  
Ms. Ruth A. Good  
Ms. Louise Gottschall

Mrs. Natalie Graham  
Mrs. Joan Greaser  
Mrs. Loretta L. Greaser  
Mrs. Mary Pat Griffin  
Mrs. Catherine Griffith  
Mr. Leroy Grine  
Mr. and Mrs. Ronald O. Grove  
Mr. and Mrs. Jay A. Grubb  
Mr. and Mrs. Timothy L. Gunsallus  
Mrs. Dorothy A. Hall  
Mr. and Mrs. Thomas J. Haluska  
Mr. James R. Hammons  
Mrs. Holly A. Hammon  
Mrs. Nancy S. Hampton  
Mrs. Ann Marie Hand  
Mr. Eugene R. Harker  
Mr. Marc L. Harris  
Mr. and Mrs. Charles R. Hassinger  
Mr. and Mrs. Robert B. Havice  
Mr. and Mrs. Edward P. Haywood  
Ms. Lori Hazenstab  
Mrs. Mary Ellen Hazenstab  
Mr. and Mrs. John L. Hefright  
Mr. and Mrs. Jan Heller  
Mr. and Mrs. Leroy M. Helmer  
Ms. Ann M. Helwig  
Mrs. Carole S. Hendricks  
Mr. and Mrs. Richard K. Henney  
Mr. W. G. Henry  
Mr. David Hess  
Ms. Lorrie J. Hetager  
Mr. and Mrs. Dennis M. Hicks  
Mrs. Eileen Hileman  
Mr. and Mrs. Charles M. Hill  
Mr. and Mrs. James L. Hilling  
Mrs. Elaine H. Hinkle  
Ms. Florence E. Hirt  
Mr. James D. Hitchings  
Mr. and Mrs. Chuck Hoenstein  
Mrs. Lillian D. Hollen  
Mrs. Mary Louise Holtz  
Mrs. Lydia Hoopes  
Mr. James E. Hoover  
Ms. Linda Hoover  
Mr. and Mrs. Ronald J. Hoover  
Mr. and Mrs. John Horon  
Mr. and Mrs. John D. Horwhat  
Mr. and Mrs. David H. Hostetter  
Mr. and Mrs. Gerald E. Houck  
Mr. and Mrs. Kenneth L. Hower  
Ms. Jacquelyn E. Howsare  
Mr. John E. Huff  
Mrs. Elizabeth A. Hufford  
Mr. Thomas O. Humbert, Jr.  
Mr. and Mrs. Christopher C. Humes  
Mr. and Mrs. Brian J. Hummel  
Ms. Elizabeth J. Humphreys  
Mr. Donald H. Hunter  
Mrs. Jane Hutzel  
Mr. and Mrs. Cletus W. Illig  
Rev. Lynn and Sue Illingworth  
Mr. Cletus E. Imler  
Mr. and Mrs. John B. Iorio

Mr. and Mrs. Cecil J. Irving, Jr.  
Mr. and Mrs. Thomas Irwin  
Ms. Tina M. Irwin  
Mr. and Mrs. Klaus Jaeger  
Mr. and Mrs. Raymond C. Johnson  
Mr. and Mrs. Timothy D. Johnson  
Ms. Suzanne Johnston  
Ms. Doris Jones  
Mr. William E. Jones  
Ms. Benita M. Jorkasky  
Mr. and Mrs. Melvin A. Kadane  
Mr. Glenn F. Kagarise  
Mr. and Mrs. Harold A. Kann  
Mrs. Linda S. Kanoff  
Ms. Diane P. Karikas  
Mr. and Mrs. Ronald L. Kauffman  
Mrs. Marianna Z. Keagle  
Mr. and Mrs. Robert L. Keefer  
Mrs. Marcella J. Keenan  
Mr. Michael R. Kelleher  
Ms. Madeleine L. Keller  
Miss Beverly J. Kelley  
Mr. and Mrs. Brian P. Kelley  
Sr. M. Jane Kelly  
Mr. and Mrs. Brian S. Kendall  
Mr. and Mrs. G. Fred Kensinger  
Mr. Ernest Kephart  
Mr. and Mrs. Daniel F. Kerstetter  
Mrs. Frances C. Kessler  
Mr. and Mrs. Raymond Ketcham  
Mrs. Mary Jane Kingsbury  
Mrs. Nancy W. Klaban  
Ms. Louise E. Kline  
Mrs. Emma S. Kneidinger  
Mrs. Peggy A. Knipple  
Mrs. Therese Knob  
Mr. and Mrs. Larry Knott  
Mrs. Janice E. Kocher  
Mr. Frank B. Kolbensschlag  
Ms. Catherine Kontorchik  
Mr. Paul E. Kopp  
Hon. Jolene G. and Mr. Thomas W. Kopriva  
Ms. Elizabeth J. Kovach  
Mr. Paul Krug  
Mr. John F. Kubacka  
Mrs. Susan M. Kuhn  
Mr. and Mrs. Charles Lafferty  
Mrs. Paula J. Lafferty  
Mr. and Mrs. John B. Lake  
Dr. and Mrs. Robert C. Lamey  
Mr. Jemmings M. Lantz  
Ms. Lisa L. Lantz  
Mrs. M. Joanne Lascoli  
Mrs. Shirley M. Latterner  
Mrs. Cheryl M. Lauer  
Ms. Mary M. Laughlin  
Ms. Denise Lawrence  
Mrs. Mary F. Leap  
Mr. and Mrs. Adam P. Lee  
Mr. Anthony G. Leeper  
Mrs. Eileen W. Leibowitz  
Mr. and Mrs. Wynn Leppert  
Ms. Christine Lichtig

*Individual Donations Received July 1, 2015 - December 31, 2015*

Ms. Martha L. Liebegott  
Lt. Col. and Mrs. George M. Lightner, Jr.  
Mr. and Mrs. W. James Lightner  
Mrs. Mary E. Lindsey  
Mr. Cletus Link  
Mr. Timothy C. Link  
Ms. Donna L. Litke  
Mr. Norman H. Little  
Ms. Patricia Lloyd  
Mr. and Mrs. Carl Locke  
Ms. Shannon Long  
Mr. and Mrs. Harold A. Longenecker  
Ms. Sue E. Lounsbury  
Mr. Robert A. Low  
Mrs. Cheryl A. Luciano  
Mr. and Mrs. James Lumadue  
Ms. Ruth P. Lundquest  
Mr. Primo V. Lusardi  
Ms. Susan Lynd  
Mr. and Mrs. Donald G. Lynn  
Ms. Marian E. Lynn  
Mrs. Mary M. Lysinger  
Mr. Michael J. Macovitch  
Mrs. Florence Magusiak  
Mrs. Hilda C. Mallory  
Mr. and Mrs. Rolland E. Malott  
Mr. and Mrs. Angelo R. Marasco  
Ms. Josephine K. Mark  
Ms. Cristina R. Marks  
Mrs. Shirley Marsh  
Mrs. Susan B. Martin  
Mr. and Mrs. Frank P. Massimilla  
Mrs. Doris Mattern  
Ms. Lori Mattice  
Mrs. Cynthia H. Mattivi  
Ms. Darla K. May  
Dr. and Mrs. Stanley P. Mayers, Jr.  
Mrs. Michaelene K. McCahan  
Mr. Robert K. McCahan  
Mr. Shawn P. McCarl  
Mrs. Lavonda McClain  
Pastor and Mrs. Stewart W. McClelland  
Mr. and Mrs. Regis S. McCloskey  
Mr. and Mrs. David J. McConnell  
Mr. and Mrs. Harry J. McConnell  
Mr. and Mrs. Fred McCorkle and family  
Ms. Mary M. McCoy  
Mr. and Mrs. John P. McElhany  
Ms. Gloria J. McGarry  
Mrs. Margaret T. McGarry  
Mr. John R. McGhee, Jr.  
Mrs. Dorothy M. McKee  
Mr. David A. McKinney  
Mr. and Mrs. William McManus, Jr.  
Mr. and Mrs. Robert McMasters  
Mr. and Mrs. Robert C. McPhee  
Mrs. Geraldine F. McTaggart  
Mrs. Dolores A. Mears  
Ms. Rachel R. Meek  
Mr. and Mrs. Dan W. Mertz  
Ms. Charlotte Messner  
Mr. Stanley R. Metz  
Mr. Ronald A. Mickel

Mr. Emanuel K. Miller  
Ms. Isadora A. Miller  
Mr. James A. Miller, Jr.  
Mrs. Laura M. Miller  
Mrs. Mildred S. Miller  
Mr. Jan D. Mills, Sr.  
Mr. Terrance Moore  
Ms. Linda Moran  
Mrs. Ruth Ann Morello  
Mrs. Susan K. Morgan  
Ms. Shannon Morris  
Ms. Laura Morse  
Mr. and Mrs. Andrew J. Moser  
Mrs. Bernice F. Mowrer  
Mr. Ronald P. Muffie, Sr.  
Ms. Nancy W. Mullendore  
Ms. Sharon K. Murphy  
Mrs. Phyllis C. Murray  
Mrs. Edith Musselman  
Mrs. Marlene J. Musser  
Mrs. Martha M. Musser  
Mr. D. Elwood Myers  
Ms. Jean P. Myers  
Mrs. Marie S. Nachtman  
Mr. and Mrs. Denis J. Navarro  
Mr. Ronald Neidigh  
Ms. Jean F. Nelson  
Mr. and Mrs. Kevin J. Nester  
Mrs. Lori Noel  
Mr. Vincent P. Norris  
Ms. Shirley A. Nycum  
Mrs. Audrey M. Oaks  
Mrs. Grace H. Ormston  
Mrs. Carolyn S. Orner  
Mr. and Mrs. Joseph H. Orr, Jr.  
Ms. Cynthia M. Oswald  
Mr. Larry E. Otto  
Mrs. Mary J. Owen  
Rev. and Mrs. Irvin S. Owens  
Mr. and Mrs. Robert R. Packer  
Mrs. Carolyn B. Painter  
Mr. and Mrs. James A. Park  
Mrs. Marie P. Park  
Ms. Stacy Ann Parrish  
Ms. Jo-Ann Parsons  
Mrs. Ramona M. Parsons  
Mrs. M. Roberta Patterson  
Mrs. Betty J. Patton  
Mr. Richard T. Paul  
Mrs. Jeanine D. Peterson  
Mrs. Marie Piastrelli  
Mrs. Shirley R. Pike  
Ms. Ruth A. Pinkas  
Ms. Suzanne P. Piotrowski  
Mr. and Mrs. Neil M. Port  
Ms. Lydia K. Price  
Mrs. Audrey T. Querry  
Mrs. Arlene R. Rainelli  
Dr. and Mrs. James W. Ramsay  
Mrs. LaMar J. Ramsey  
Mr. and Mrs. Charles C. Ransom  
Ms. Robin O. Rawdon  
Mrs. Melody Ray

Mrs. Patricia Reeder  
Mr. and Mrs. Robert G. Reeder  
Ms. Carole Reel  
Mr. and Mrs. Fred Reigh  
Dr. and Mrs. James E. Renney  
Mr. Donald Replogle  
Mr. and Mrs. Richard L. Reynolds  
Mrs. Ann M. Rhodes  
Ms. Debra L. Rhodes  
Mr. and Mrs. Earl P. Rhodes, Jr.  
Mrs. Lois L. Rhodes  
Ms. M. Carol Rhodes  
Mrs. Zelda M. Riddle  
Mr. and Mrs. Ken Riggelman  
Mrs. Louise Riley  
Mr. Robert Ritchey  
Mr. Raymond Ritti  
Ms. Ann L. Roarabaugh  
Mrs. Doris J. Roberto  
Mr. and Mrs. Carl A. Robison  
Mr. and Mrs. Stephen E. Robuck  
Ms. Velda B. Rodamer  
Ms. Kimberly Rode  
Mr. and Mrs. Dennis A. Rodriguez  
Mrs. Gloria S. Rogers  
Mrs. Phyllis A. Rogers  
Mrs. Donna K. Romig  
Mrs. Gail M. Romig  
Mr. and Mrs. David M. Rose  
Ms. Jean Rose  
Mr. and Mrs. James D. Rosenthal  
Ms. Kathleen R. Rosian  
Ms. Delora H. Ross  
Mrs. Mary E. Rossman  
Mr. Albert Roth  
Mr. Allen L. Rowe  
Ms. Carolyn C. Ruble  
Mrs. Donna R. Rudasill  
Mr. and Mrs. Donald A. Ruggery, Jr.  
Mr. Charles A. Rummel, Sr.  
Mrs. Beatrice Rush  
Mr. Christopher Russell  
Mr. Jared Russell  
Mr. Paul V. Ruth  
Mr. Fred I. Rutherford  
Dr. Joanne Rutkowski  
Mrs. Darice Rutter  
Mrs. Frieda D. Safyan  
Mr. and Mrs. Henry D. Sahakian  
Ms. Teresa Salome  
Rev. William Santre, TOR  
Mrs. Barbara B. Sarra  
Ms. Patricia Savage  
Mrs. Dona J. Savine  
Ms. Nancy Savino  
Ms. Debra L. Saylor  
Mr. Regis W. Schall  
Ms. Carolyn L. Scheetz  
Ms. Jane M. Scherden  
Mrs. Elizabeth A. Schimminger  
Mr. William F. Schneider  
Mr. and Mrs. Robert F. Scholl  
Ms. Thelma J. Schooley



Mr. Rayford C. Schrock  
Mr. Kerry D. Schultz  
Mrs. Mary A. Scott  
Mr. and Mrs. Richard H. Searer  
Mr. and Mrs. James P. Seasoltz  
Mr. and Mrs. Timothy J. Seasoltz  
Mrs. Lisa D. Segada  
Mr. and Mrs. Edmond L. Seguin  
Ms. Amy Seltzer  
Mr. Steven S. Seltzer  
Mr. H. Senne  
Mr. and Mrs. Timothy P. Servello  
Mr. Patrick Shaughnessey  
Ms. Martha J. Shay  
Mrs. Nancy Shedd  
Mrs. Mary A. Sheedy  
Mr. and Mrs. William Sheedy  
Mrs. Patricia A. Sheetz  
Mr. and Mrs. Joseph Shellenberger  
Mr. John W. Shepps  
Mr. James M. Sheridan  
Ms. Barbara Sherlock  
Mrs. Dorothy A. Shields  
Ms. Lynn K. Shields  
Mr. and Mrs. Raymond P. Shipp  
Mr. J. Douglas Shook  
Mr. Charles W. Shoop  
Mrs. Lillian A. Shore  
Mr. H. Max Short  
Mr. and Mrs. Dewey Showalter  
Ms. Betty J. Shultzaberger  
Mr. Edward J. Simon, II  
Mrs. Lois Simone  
Mr. and Mrs. Brad Singer  
Ms. Sandra M. Singer  
Mr. and Mrs. Philip B. Sky  
Ms. Darlene Smith  
Mrs. Evelyn L. Smith  
Ms. Kathleen A. Smith  
Ms. Marlene J. Smith  
Mr. and Mrs. R. Leroy Smith  
Mrs. Tracy P. Smith  
Mr. and Mrs. William R. Smith  
Mr. and Mrs. Richard Smucker  
Mr. and Mrs. Bruce G. Snider  
Mr. David S. Snowberger  
Mrs. Barbara A. Snyder  
Ms. Edith T. Snyder  
Mr. William I. Snyder  
Mr. and Mrs. Bruce Soliday  
Ms. Elaine Solomon  
Mrs. Lilia J. Sprankle  
Ms. M. Christine Squier  
Mrs. Norma L. Stake  
Ms. Anna L. Stapleton  
Mr. and Mrs. Charles L. States  
Mr. and Mrs. Clyde Stayer  
Mr. William Stayer  
Ms. Kathy L. Steel  
Mrs. Joyce L. Steinbauer  
Ms. Catherine G. Steinbrunner  
Ms. Carolyn M. Stenger  
Ms. Hazel Stephenson

Mr. and Mrs. Marty A. Stern  
Mr. and Mrs. Jerry A. Stern  
Mrs. Geraldine F. Stevens  
Ms. Elizabeth Stiffler  
Mr. and Mrs. Mark Stockley  
Mr. and Mrs. Lester E. Stover  
Mrs. Linda Stover  
Mrs. Joanne Straw  
Ms. Carol L. Stringer  
Mrs. Anne Strong  
Mrs. Joan E. Strunack  
Mr. and Mrs. James D. Stuart, Sr.  
Mrs. Grace W. Stultz  
Mrs. Lisa Sukenik  
Ms. Kristine Sullivan  
Mr. and Mrs. Donald J. Swanson  
Dr. Amy Swindell-Cummings and  
Mr. Timothy J. Cummings  
Mr. Edward A. Tamm  
Mr. George E. Taneyhill  
Mr. and Mrs. W. F. Tauber  
Ms. Ellen Teach  
Mrs. Kathryn A. Terrizzi  
Mr. and Mrs. David E. Thomas  
Ms. Tonia L. Thomas  
Mr. and Mrs. Thomas A. Thompson  
Ms. Dee Thorpe  
Mrs. Helen T. Tomassetti  
Ms. Sally B. Toner  
Mr. Mark A. Tree  
Mr. and Mrs. Joseph J. Tremblay  
Mrs. Marie Tremel  
Ms. Carla Trexler  
Mr. J. P. Trexler  
Mr. William H. Trippler  
Ms. Sharon Troy  
Mrs. Karen M. Truesdale  
Mr. and Mrs. Christopher H. Turley  
Mrs. Jennie M. Turner  
Ms. Jacklyn F. Valentine  
Mr. John S. Vancas  
Ms. Germaine K. Vigne  
Ms. Cathy Vincent  
Mrs. Rose E. Voth  
Mr. Paul J. Vrabel  
Mrs. Barbara Wachter  
Ms. Joanne Wade  
Mrs. Joyce R. Wagner  
Mrs. Sylvia Wahler  
Mr. and Mrs. Donald Wakefoose  
Ms. Denise A. Walters  
Mrs. Ethel Walters  
Ms. Donna L. Weaver  
Ms. Freda S. Weaver  
Mr. and Mrs. Shawn C. Weaver  
Ms. Linda Weber  
Ms. Julie Weicht  
Mr. and Mrs. Robert E. Weller  
Mr. Robert E. Wertz  
Mr. Douglas M. Westover  
Mr. and Mrs. James E. Westrick  
Mr. and Mrs. Stephen Weyandt  
Mr. William L. Wheeler, Jr.

Mr. Lynn Wheland, Sr.  
Ms. Debbie White  
Mr. and Mrs. Jay S. White  
Ms. Patricia A. White  
Mr. Gary Whitfield  
Mrs. Peggy A. Whittington  
Mr. and Mrs. Edward C. Wigfield  
Mrs. Betty J. Wilkinson  
Mr. and Mrs. William S. Willey  
Mrs. Deborah S. Williams  
Ms. Nichole Williams  
Mr. and Mrs. David J. Willnecker  
Mrs. Bethel M. Wills  
Mr. Donald L. Wilson  
Mrs. Leslie P. Wilson  
Mrs. Lorraine J. Wilson  
Mr. Rodney M. Wilson  
Ms. Mary A. Winkler  
Ms. Patricia M. Winters  
Ms. Jessie L. Wise  
Mr. Gerald Wisner  
Mr. and Mrs. John J. Wolf  
Mr. Edward J. Wolfe  
Mrs. Louise Wolfe  
Mrs. Patricia F. Wolford  
Ms. Grace B. Wood  
Ms. Dixie D. Woodard  
Mr. and Mrs. Dave A. Woodle  
Mr. and Mrs. Thomas W. Woodrow, Jr.  
Mr. Bernard E. Wright  
Mr. and Mrs. William J. Wright  
Mr. and Mrs. Mark Yahner  
Ms. Judith A. Yingling  
Mr. and Mrs. Earl Yoder  
Mr. and Mrs. David F. Zakrzewski  
Mr. W. Robert Zaph  
Mr. and Mrs. Donald R. Zeiders  
Mrs. Janet W. Zerby  
Mrs. Hazel A. Zimmerman  
Mr. John N. Zitzlsperger  
Mr. Boyd K. Zook  
Mr. and Mrs. John W. Zook  
Mrs. Rita V. Zupon  
Mrs. Sondra R. Zupon

# HNA EVENT CALENDAR

PLAN TO JOIN US FOR THESE UPCOMING EVENTS!

## SERVICES OF REMEMBRANCE

Community members who have experienced the loss of a loved one are invited to attend a Service of Remembrance at one of the locations listed below. **All services begin at 3 p.m.**

Pay special tribute to loved ones who have passed away by sharing your loved one's name to be read during the service and by decorating a luminary bag to be displayed. Attendees may arrive at 2:30 p.m. to decorate luminary bags before the service begins at 3 p.m. Please register your attendance online at [www.homenursingagency.com](http://www.homenursingagency.com) or by calling 1.800.445.6262 (select option three and ask for ext. 2566).

### • Centre County: Sun., Oct. 16

Trinity Lutheran Church  
2221 N. Oak Lane, State College

### • Mifflin/Juniata Counties: Sun., Oct. 23

Grace United Methodist Church  
101 Logan Street, Lewistown

### • Cambria County: Sun., Oct. 30

Cresson United Methodist Church  
619 5th Street, Cresson

### • Huntingdon County: Sun., Nov. 6

St. James Lutheran Church  
525 Mifflin Street, Huntingdon

### • Blair County: Sun., Nov. 13

Trinity Lutheran Church  
408 N. 6th Street, Altoona

### • Bedford County: Sun., Nov. 20

Bedford Church of the Brethren  
310 Donahue Manor Road, Bedford

## THE PATCH CLUB:

### A 1920s SPEAKEASY EVENT

Friday, Oct. 28, 2016 | 6 p.m.

The Casino at Lakemont, Altoona

See more details on back page.

## THE CREATIVE HEALING GALLERY

Tuesday, Nov. 1, 2016 | 12-6 p.m.

Community Health Center, Altoona

Check out the unique works of our art therapy artists who use various media as an outlet for their emotions.

## LIGHTS OF LOVE

November - January

Lights of Love will once again be displayed in our local areas with blue and white lights representing hospice and grief services. The Lights of Love holiday giving campaign invites people to make a donation of any amount in honor or memory of loved ones. Make a donation online at [www.homenursingagency.com](http://www.homenursingagency.com) and post a dedication on our interactive trees in memory or honor of your loved one. Donations can also be made by calling 1.855.GIVE.HNA (1.855.448.3462).

## CHILDREN'S GRIEF AWARENESS DAY

Thursday, Nov. 17, 2016

Wear blue to show your support for grieving children in our community. We'll be sharing photos of CGAD supporters on our HNA Facebook page, so please send your photos to [celebrategiving@homenursingagency.com](mailto:celebrategiving@homenursingagency.com).

## PATCHED TOGETHER: A DAY OF MUSIC TO BENEFIT THE HEALING PATCH

Saturday, Nov. 19, 2016 | 2-10 p.m.

The Bavarian Aid Society, Altoona  
Live music, giveaways, games, and family fun will combine in the Sixth Annual Patched Together concert. This annual all-day event harnesses the power of music to raise funds on behalf of the Healing Patch. To learn more, visit [www.patchedtogether.com](http://www.patchedtogether.com)

## MERCEDES MOMENT 2017

Thursday, May 18, 2017

Ticket sales will begin soon for the HNA Foundation's signature fundraiser. A \$100 ticket gives you a 1 in 1,000 chance to win a new Mercedes or \$30,000 cash! To be added to the pre-sale mailing list, please call 1.855.GIVE.HNA (1.855.448.3462).

# WAYS TO GIVE CHANGE A LIFE

How can you make a difference for patients, clients, and families served by Home Nursing Agency?

- Make an outright donation by calling 1.855.GIVE.HNA, going online at [www.homenursingagency.com](http://www.homenursingagency.com) or by mailing a donation to: Home Nursing Agency Foundation, 201 Chestnut Avenue, Altoona, PA 16603.

- Consider remembering Home Nursing Agency in your will with a gift of a specific property, dollar amount, or percentage of your estate.

- Volunteer to share your time and talents through hospice, the Healing Patch children's grief program, ACEL (Adult Center for Exceptional Learning) for individuals with intellectual and physical disabilities, or other Agency programs/services. Learn more about volunteer opportunities by checking out our website at [www.homenursingagency.com](http://www.homenursingagency.com).

For more information about ways you can help, please contact: Pam Seasoltz, Director of Development  
814.946.5411 ext. 2565 or [pseasoltz@homenursingagency.com](mailto:pseasoltz@homenursingagency.com)

The official registration and financial information of Home Nursing Agency may be obtained from the Pennsylvania Department of State by calling toll-free, within Pennsylvania, 1-800-732-0999. Registration does not imply endorsement.

If you would like to be removed from our mailing list please contact the Home Nursing Agency at 1-800-992-2554.







## Psst....Have you heard?

Say the password to get into this unique Prohibition-era event and enjoy an interactive mystery dinner theatre with music by Tommy Wareham and the Intrigues. Revel in great food, decadent spirits, cool jazz, and an interactive mystery whodunit, and footloose dancing—all to benefit The Healing Patch children's grief program.

**October 28, 2016 | 6 pm**  
**The Casino at Lakemont, Altoona**  
**Tickets are only \$50 each with cash bar.**

### TICKET BUYING OPTIONS:

- Purchase tickets online at [www.homenursingagency.com](http://www.homenursingagency.com). Tickets will be mailed to you within two weeks of payment.
- Call 1.855.GIVE.HNA (1.855.448.3462)
- Visit the HNA Corporate Office at 20 Sheraton Dr., Altoona or the HNA Administrative Office at 201 Chestnut Ave., Altoona 8:30 a.m. - 4:30 p.m. Monday - Friday

### SPEAKEASY SPECIAL: FILL A TABLE

Fill a table of eight people for the price of seven! This offer cannot be redeemed online, so please call the Foundation at 1.855.GIVE.HNA (1.855.448.3462) to purchase your table of eight!